

In this issue:

• Advantages of a Newsletter

• Add Value to Your Newsletter

Jan 2023

Updates and Opportunities

Volunteering Opportunities

Do you have some spare time in the week, want to get outdoors in the fresh air, be active and meet new people? Join our award winning **Thursday Action Group** team of volunteers and help Medway Valley Countryside Partnership with our practical habitat management and access works. Tasks are seasonal and include such things as tree planting, hedge laying, apple picking, path and platform construction and more. Call Derek on 03000 414812 or email derek.whitehead@kent.gov.uk

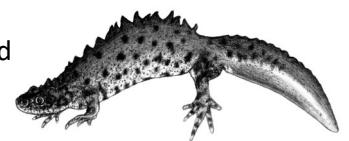


Wellbeing Walks

Join the MVCP on one of many Wellbeing Walks. At a variety of locations across the area, these short walks are designed for those over 55 or with long term health conditions and are gentle and beneficial for your overall wellbeing. Call 03000 422997 or email medwayvalley@kent.gov.uk for more info. Alternatively, search for us on Eventbrite to find all our walks and reserve a space. These walks are free and sponsored by Involve Kent. Participants will need to complete a short questionnaire for our funders.

Pond Creation and Restoration

Would you like a wildlife pond on your property or land? Do you already have a pond which is in need of restoration?



Along with the other Kent Countryside Management Partnerships, MVCP can create or restore ponds as part of a Natural England funded project, which aims to create more habitat for Great Crested Newts.

Specifically we are looking to currently create or restore ponds in the borough of Tonbridge and Malling (though do contact us about other areas too). If you are interested please get in touch with either andrea.griffiths@kent.gov.uk or sarah.harrington-james@kent.gov.uk

As part of this project, MVCP will continue to monitor the pond into the future.



Please note, not all locations are suitable and not all existing ponds will qualify but we will happily check out the details and come out to see your pond or the location where you'd like one and advise and set the project in motion if the pond/location meets the project criteria. Minimum size for pond creations is 150m²—so these are not suitable as small garden ponds.

Follow us on Social Media: @MedwayValley   [medway.valley.c.p](https://www.facebook.com/MedwayValley) 